

Design / LED Double Flash/Multi-Tone Sounder 444

## LED Flash/Sounder BWM 32 tne 48VAC YE



Part No.: 444.300.66



### MECHANICAL DATA

|                              |                                |
|------------------------------|--------------------------------|
| Length                       | 112 mm                         |
| Width                        | 109 mm                         |
| Height                       | 150 mm                         |
| Materials                    | PC<br>PC/ABS                   |
| Dome colour                  | Yellow                         |
| Housing colour               | Black                          |
| Protection category          | IP65                           |
| Connection                   | Screw terminals                |
| cross-sectional area maximum | 1,50mm <sup>2</sup> / 16AWG    |
| Cable entry                  | Membrane grommet               |
| Cable entry minimum          | d = 1 mm                       |
| Cable entry maximum          | d = 13 mm                      |
| Type of fixing               | Base mounting<br>Wall mounting |
| Working temperature minimum  | -30°C                          |
| Working temperature maximum  | +50°C                          |
| Weight with packaging        | 540 g                          |
| Product weight               | 470 g                          |

### ELECTRICAL DATA

|                             |                    |
|-----------------------------|--------------------|
| Operating voltage           | 48V                |
| Operating voltage type      | AC                 |
| Operating voltage frequency | 50Hz               |
| Operating voltage tolerance | +/- 10%            |
| Rated operational voltage   | 48 VAC             |
| Rated operational current   | 180 mA             |
| Rated inrush current        | 500 mA             |
| Protection class            | Protection class 2 |
| Pollution degree            | 3                  |

### OPTICAL DATA

|                      |                  |
|----------------------|------------------|
| Light source         | LED              |
| Light colour         | Yellow           |
| Optical signal image | Flash            |
| Flash frequency      | 1 Hz             |
| Flash output         | 2 J              |
| Service life optical | 50,000 h maximum |

### ACUSTICAL DATA



For additional installation and mounting information, refer to the appropriate user guide at [www.werma.com](http://www.werma.com). This printed copy is for information only and is subject to alteration.

Design / LED Double Flash/Multi-Tone Sounder 444

## LED Flash/Sounder BWM 32 tne 48VAC YE

|                             |                 |
|-----------------------------|-----------------|
| Volume (max) at 1m distance | 114,0 dB (A)    |
| Acoustic signal image       | Multi-tone      |
| Number of tones             | 32 tone         |
| Acoustic service life       | 5,000 h minimum |

### APPROVAL DATA

|                               |                       |
|-------------------------------|-----------------------|
| Conforms with CE              | Yes                   |
| WEEE                          | Yes                   |
| Conforms with ATEX-directive  | No                    |
| Conforms with CCC             | No                    |
| Conforms with UL              | No                    |
| Conforms with FCC             | No                    |
| Conforms with IC              | No                    |
| EAC certificate available     | Yes                   |
| Conforms with UKCA (Importer) | Yes (WERMA (UK) Ltd.) |
| Conforms with AS-I            | No                    |
| ICAO Certification            | No                    |
| Conforms with DNV             | No                    |
| Conforms with RoHS CN         | No                    |
| Conforms with VdS             | No                    |

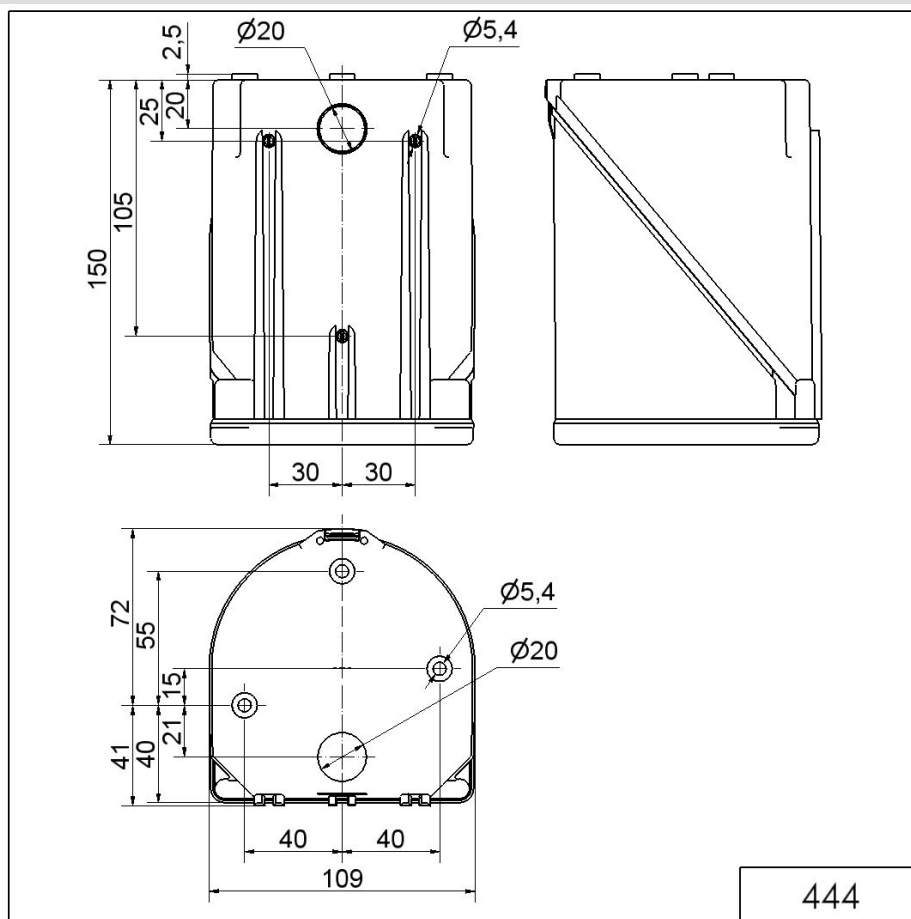


For additional installation and mounting information, refer to the appropriate user guide at [www.werma.com](http://www.werma.com). This printed copy is for information only and is subject to alteration.

Design / LED Double Flash/Multi-Tone Sounder 444

**LED Flash/Sounder BWM 32 tne 48VAC YE**

**DRAWING**



! For additional installation and mounting information, refer to the appropriate user guide at [www.werma.com](http://www.werma.com). This printed copy is for information only and is subject to alteration.