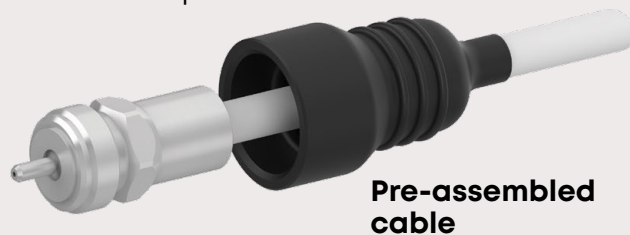
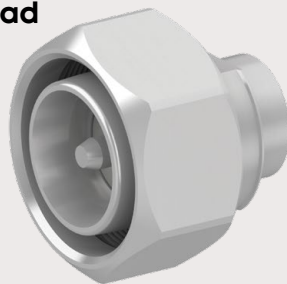


SPJ assemblies

Flexibility meets flawless performance

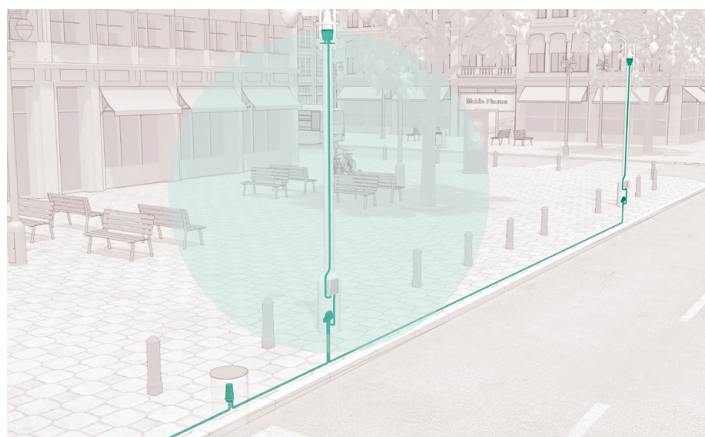
Connector head



Pre-assembled cable



Pull-eye cap



High-performance connectivity for demanding RF environments:

The HUBER+SUHNER SPJ/SM assemblies are engineered for applications where exceptional electrical performance and installation flexibility are critical. Designed with Sucoform hand formable cables and plenum-rated materials, these jumpers deliver optimum VSWR, low attenuation, and excellent PIM performance, even in the most space-constrained environments.

Perfectly suited for:

- **Indoor and outdoor DAS (Distributed Antenna Systems)**
- **Small Cell deployments**
- **Coaxial links between antennas and feeder lines**
- **Connections between active and passive components in DAS trays**

Whether you're routing cables through tight spaces or ensuring long-term reliability in mission-critical networks, the SPJ/SM jumper provides a **robust, high-quality solution** without compromise.

The solution: SPJ modular system

Features: HUBER+SUHNER SPJ assemblies are engineered to simplify cable installation in space-constrained environments. The PCC assembly is delivered without a connector interface and must be ordered in conjunction with one of the listed compatible connectors. Thanks to their modular design, the cable can be routed through extremely tight spaces first, with the connector head mounted afterward, enabling flexible, efficient installation without compromising performance.

Electrical specs:

- Operating frequency: DC to 6 GHz
- PIM at 2x43 dBm tones ≤ -160 dBc, -165 dBc typically
- Shielding efficiency ≥ 100 dB
- Return loss RL up to 2.2 GHz ≥ 27 dB

Key features:

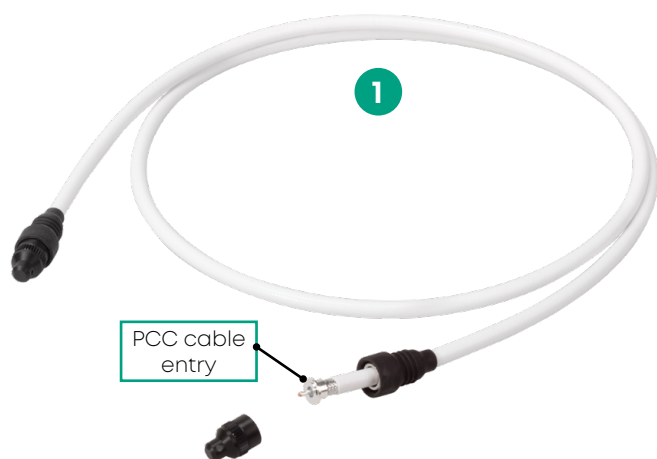
- Excellent low loss and Low PIM
- Small bending radius
- Plenum certified cables
- Excellent shielding performance

Environmental specs:

- Temperature range: -40 to $+105^{\circ}\text{C}$
- UV-stability: UV-resistant
- Ingress protection rating: IP67
- UL444/CMP/FT6, ETL listed

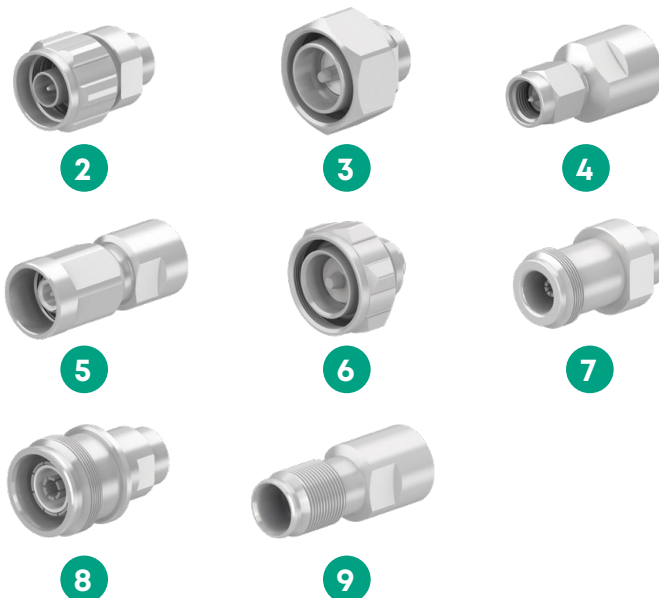
HUBER+SUHNER

Pre-assembled jumper



NOTE: The cable can be used flexibly in conjunction with any listed connectors.

Connector heads



Pre-assembled jumpers

#	H+S part	Description	Length	Cable outer diameter	SPJ cable product	Remarks
1	85267874	SPJ/SM122L/PCC/PCC/00500	0.5m/19.7"	3.65mm/0.144"	SPJ_SM122L_PCC	PCC cable entry right and left. Pull eye cap and cable entry protection included.
1	85267875	SPJ/SM122L/PCC/PCC/01000	1m/39.4"			
1	85267876	SPJ/SM122L/PCC/PCC/02000	2m/78.74"			
1	85097762	SPJ/SM141L/PCC/PCC/00500	0.5m/19.7"	4.1mm/0.161"	SPJ_SM141L_PCC	
1	85097763	SPJ/SM141L/PCC/PCC/01000	1m/39.4"			
1	85097765	SPJ/SM141L/PCC/PCC/02000	2m/78.74"			
1	85140282	SPJ/SM222L/PCC/PCC/00500	0.5m/19.7"	6.2mm/0.244"	SPJ_SM222L_PCC	
1	85118209	SPJ/SM222L/PCC/PCC/01000	1m/39.4"			
1	85081440	SPJ/SM222L/PCC/PCC/02000	2m/78.74"			

Connector heads

Connector type	#	Male straight (H+S part)	#	Female straight (H+S part)
N	2	85079663	7	85082504
4.3-10	3	85079675 (HEX Nut)	8	85080345
SMA	4	85086064	-	-
NEX10	5	85099127	9	85102243
7/16	6	85079671		

Additional part numbers and custom cable assemblies with various connector configurations and lengths are available upon request.

Why HUBER+SUHNER?

With a proven track record in telecom deployments, HUBER+SUHNER's SPJ assemblies provide a unique solution for applications with limited space for cable routing. We offer pre-assembled cable entry jumpers combined with connector heads of your choice for easy field installation.



Contact us to learn more about SPJ assembly or scan QR code